



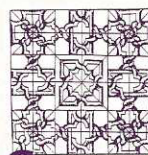
*Using*  
**HERBS**

*in the*

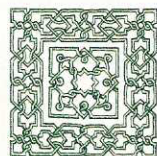
**LANDSCAPE**

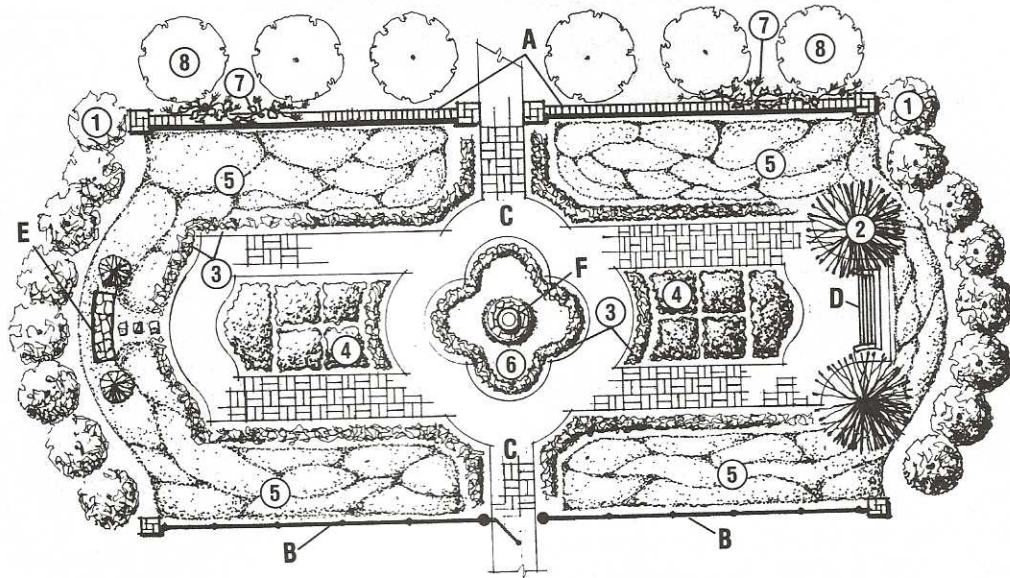


*How to design  
and grow gardens of  
herbal annuals, perennials,  
shrubs, & trees*

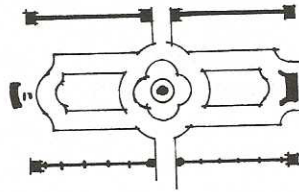
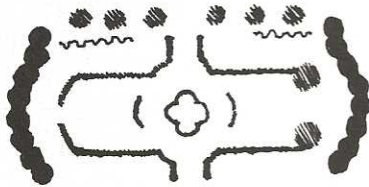


**Debra Kirkpatrick**





Plan



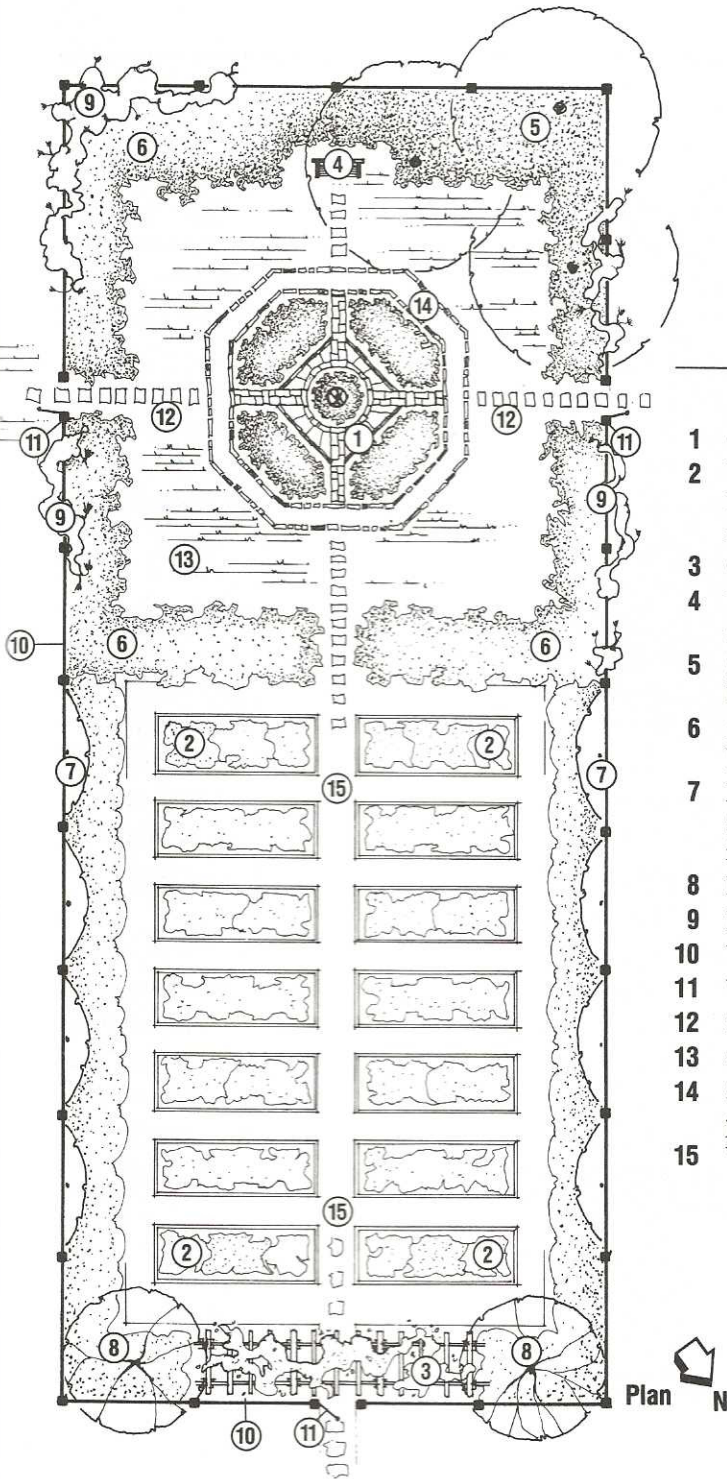
LEGEND

PLANTS

- 1 Evergreen herbal hedge
- 2 Small, fragrant herbal tree
- 3 Small edging herbs
- 4 Culinary and aromatic herbs
- 5 Ornamental herbs and flowering perennials
- 6 Seasonal-interest flowering herbs, annuals, and bulbs
- 7 Fragrant herbal vine and climbing Old World roses
- 8 Dwarf fruit trees

BUILDING MATERIALS

- A Free-standing, pierced brick wall with end piers
- B Antique wrought iron fence and gate
- C Brick paver paths in basketweave pattern
- D Teakwood garden bench
- E Stone garden seat
- F Sundial or birdbath garden ornament on stone paver platform



LEGEND

- 1 Culinary herb garden with sundial
- 2 Vegetables, cutting flowers, drying herbs and flowers, melons, and roses
- 3 Grape arbor
- 4 Wooden bench in shaded sitting area
- 5 Shade trees with shade-loving herbs beneath
- 6 Flowering perennials, annuals, bulbs, and ornamental herbs
- 7 Espaliered dwarf fruit trees along fence with small fruits and berries in beds
- 8 Dwarf fruit tree
- 9 Fragrant flowering herbal vine
- 10 Wooden picket fence
- 11 Wooden gate
- 12 Stepping stone pavers
- 13 Grass
- 14 Stone dust path edged with stone pavers
- 15 Wood chip paths

---

## *An Herb and Vegetable Garden Rooted in History*

In this garden the simple home vegetable plot is enhanced by historical garden elements. The octagonal, four-quarter culinary herb garden adds spice and flavor and helps transform the simple vegetable plot into a designed garden—and a much more enjoyable place to work and relax. Other additions to the garden include mixed herb and flower beds, small fruit and berry beds, a grape arbor, a shaded sitting area with a garden bench, a sundial, and an enclosing fence and gate, all within a series of interrelated beds and connecting paths.

This design borrows its basic elements—the enclosure, the rectangular and geometric four-square forms, the utilitarian purpose, and the plants themselves—from the early European kitchen gardens. Unlike its historical precedent, however, this garden places value on design aesthetics. Portions of the illustrated design, particularly the geometric herb garden and the well-edged perennial flower and herb beds, would be beautiful additions to any living space.

The type and style of the garden's building materials and the design of the edges of the paths, beds, and garden perimeter influence the character of the garden. The informal feeling of this design comes from the wooden picket-fence and gate, the paths of stone dust, grass, and mulch, the wooden bench, and the abundance of creeping edge plants that spill onto the path areas. If a country-casual feeling is what you want, use a wattle or split-rail fence to enclose the garden. Or dress it up by using a Chinese Chippendale gate and bench. Or, for a still more elegant feeling, consider the building materials in *A Modern Hortus Conclusus* (page 192). There are innumerable ways that you can set the tone for your garden while keeping essentially the same layout.

The components of this garden design can be easily adapted to smaller or larger spaces. This particular garden is approximately 40 feet wide and 100 feet long. The rectangular vegetable and cutting garden beds are 4 feet by 12 feet. They are slightly raised using thin landscape timbers. All perimeter beds are 4½ feet wide. The geometrical culinary herb garden is 16 feet in diameter and has 18-inch inner paths. The garden's primary paths are 3½ feet wide, and the secondary paths are 2 feet wide.

---

## A Modern Hortus Conclusus

There is something innately beautiful about an enclosed herb garden. Entering into the garden, one experiences the symbolism of stepping out of the hurried, harried pace of life and into a beautiful, peaceful haven where evocative fragrances linger. The meditative and introspective quality of an enclosed herb garden is reminiscent of the historical *hortus conclusus*, the "enclosed," "sacred," "protected" garden. Today as in the past, an enclosed garden functions as a place for pleasure, meditation, and healing of the spirit.

The perfect geometry and symmetry make this garden design still, centered, balanced, and free of tension. The form offers a high degree of order, visually unifying the lively diversity of plants and preventing it from becoming a cluttered, chaotic composition. This lovely balance of unity and spontaneity, as well as the play of light and shadow and the other ephemeral qualities of the outdoor environment, creates a remarkable atmosphere.

The illustrated garden is organized around a central planting bed. It is edged with garden pinks (*Dianthus plumarius*) and dwarf lavender (*Lavandula angustifolia* 'Munstead'). This central bed is highly visible and thus is an excellent location for seasonal-interest plants, such as spring-flowering bulbs or summer annuals. A sundial, birdbath, or other garden ornament punctuates the center.

Brick pathways extend from the center bed, defining the elongated planting beds. The masonry edge is both reinforced and softened by small herbs. You may want to repeat the garden pinks and dwarf lavender of the center bed, combining them with a variety of creeping and upright thymes. These can be planted in an irregular but repetitive fashion. The flowering perennials and herbs in the larger beds are visually unified by this edge treatment.

As you arrange the perennials and herbs in the larger beds, try to create a pleasing rhythm through the garden by repeating drifts of the same plants at various intervals. A minimum of three groupings of the same plant is a good rule of thumb. Another way of achieving rhythm is to repeat common characteristics of different plants, such as flower color, foliage color, height, or form.

The entire garden is enclosed by an ornamental wrought iron fence and gate in front, a pierced brick wall in back, and evergreen herbal hedges, such as boxwood, inkberry, or yew.

This free-standing garden would be a stunning sculptural element in a residential landscape or a public park. This is a garden for four seasons, lovely even under a light covering of snow.

This unique, comprehensive resource shows you how to design and grow gardens featuring some of nature's most beautiful, most versatile, most carefree plants—herbs. Look beyond their culinary and medicinal uses and discover their decorative qualities. Let **USING HERBS IN THE LANDSCAPE** inspire you to create attractive outdoor spaces, lovely naturalized plantings, refreshing container gardens, inviting courtyard entrances, and historically inspired knot gardens—all showcasing herbs.

**Herb Culture.** *How to grow herbs in your landscape, with lists of plants for every site.*

**Plant Profiles.** *What you need to know about dozens of herbs and herbal trees, shrubs, vines, and wildflowers, including native plants.*

**Design.** *How to design a stunning herb garden for your lifestyle and home, with easy-to-read plans and plant lists for 22 inviting gardens.*



An enclosed herb garden (see pages 192–93)

**USING HERBS IN THE LANDSCAPE** is “the first such book for American gardeners . . . a practical guide, with superb drawings, and filled with creative ideas and combinations.”

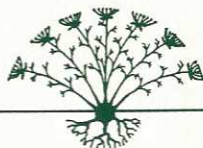
Holly Shimizu, U.S.  
Botanic Garden and the  
Herb Society of America

“A veritable encyclopedia of herbal information presented in an agreeable form, this fine reference work will appeal to scholars and practical gardeners alike.”

Elizabeth Scholtz,  
Brooklyn Botanic Garden

“This book offers fresh, contemporary alternatives to the traditional herb garden. Debra Kirkpatrick’s designs are as practical as they are graceful, and she offers suggestions for a variety of sites. You’ll find dozens of ways to include herbs in your landscape.”

Rita Buchanan,  
*Herb Companion*



ISBN 0-8117-3043-3



9 780811 730433

90000>



STACKPOLE  
BOOKS

1-800-READ-NOW

\$19.95 U.S.

0-8117-3043-3

Printed in U.S.A.