



Maryland Aviation Authority (MAA)



Introduction to Architectural x Engineering Sciences (AxES) Systems, LLC

“Our firm is fundamentally organized to involve all scientific, engineering, design disciplines and project stakeholders in a collaborative process from project initiation through implementation.”

AxES Systems, LLC

- Established 2015
- Economically Disadvantage Woman-Owned Small Business (EDWOSB)
- MDOT Minority Business Enterprise (MBE) - Certification #: 19-353
- Local Disadvantaged Business Enterprise (LDBE) - Certification #: LD20532719
- PANYNJ WBE Cert #20532719
- Small Business Administration (SBA) Mentor-Protégé with Urban Engineers, Inc
- Corporate registration in Maryland
- Registered: Architects, Interior Designers, Engineers, MEP, Civil, Structural, Construction Managers, LEED, CADD/BIM Specialists



Amanda (Franklin)
Everett, MBA
CEO

- MBA
Loyola University
Maryland, 2013
- B.S. Biochemistry
McDaniel College
Maryland, 2008
- 10+ years of experience in
technical talent acquisition
for state and federal
programs



Cliff Everett, AIA

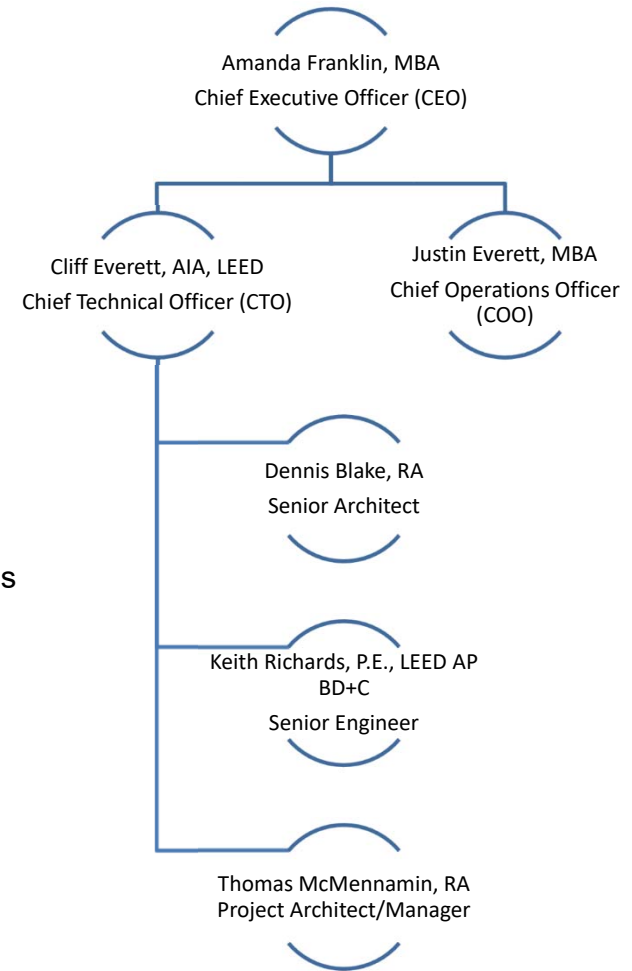
CTO/Project Manager

- Licensed: MD
- Masters Program
University of Texas at
Arlington, 1987
- B.S. University of
Maryland, 1982/Int. Design
- 30+ years of experience in
aviation architecture design
and construction
- Past experience:
URS Corporation, Michael
Baker Corporation, WSP



Organizational Chart & NAICS Codes

- 337214 – Office Furniture
- 337215 – Showcase, Partition and Shelving
- 541310 – Architectural Services
- 541330 – Engineering Services
- 541340 – Drafting Services
- 541350 – Building Inspection Services
- 541410 – Interior Design Services
- 541430 – Graphic Design Services
- 541611 – Administration Management and General Management Consulting Services
- 541613 – Marketing Consulting Services
- 541690 – Other Scientific and Technical Consulting Services
- 541715 – R&D Physical, Engineering, and Life Sciences
- 561110 – Office Administrative Services
- 561330 – Professional Employer Organizations
- 5614xx – Business Support Services



AxES Systems, LLC

Qualifications Summary

- All management staff have relevant expertise and state/federal experience
- The staff is highly credentialed and registered, many with advanced degrees, indicative of commitment to advanced training and subject matter expertise
- Majority of staff have long-histories with their respective companies—a reflection of a stable and dependable resource base



Mission Critical Disciplines



Architecture

- Code Compliance
- Programming/Concept Development
- Construction Documentation
- Space Planning & Site Analysis
- Interior/Architectural Design



Engineering

- Mechanical/Electrical Engineering
- Feasibility Studies
- Sustainable Building Design
- 3D Visualization



Science

- Research and Development (R&D) Support Services
- Test and Evaluation (T&E) Support Services
- Scientific Recruitment Services



Staff Augmentation

- Contract Administration Services
- Program Management Services
- Human Capital Management





Construction (CMI)/Program Manager, Resident Engineer

SPECIFIC CM PROFICIENCIES:

- Subject Matter Expert TSA/DHS Security/Customs Border Protection FIS, airport facility standards
- Extensive CM@R contract delivery experience
- Program Manager for concessions roll out at MSY airport for:
 - 4 Concessionaires
 - 8 contractors constructing
 - 40 lease spaces in 8 months
- Adept in planning, estimating, scheduling, design, construction inspection and contract close-out
- OSHA 30 certified
- Retain an FBI Confidential security clearance

Airport Construction Contracts by Agency

- **MWAA -- From: 02/21 - Present**
 - DCA Washington Reagan National Airport, Project Journey, Secure National Hall
 - Position: Architectural Representative/Sr. Architect
- **NOAB -- From: 02/18 - 04/20**
 - MSY Construction of Contract, North Terminal Project CNO Project No. 8910
 - Position: Construction Management/Resident Engineer/Sr. Architect
- **MAA -- From: 02/16 - 02/18**
 - BWI Construction Contract MAA-CO-15-005 -- D/E Connector and Security
 - Position: Construction Management/Resident ARE/Senior Architect
- **BCAD -- From: 08/15 - 07/16**
 - FLL Fort Lauderdale Broward County Aviation Department: Terminal 4 Eastern Expansion Project at the
 - Position: Architectural Representative/Sr. Architect



**MSY Louis Armstrong New Orleans International
North Terminal Project (35 Gates)**



**FLL - Fort Lauderdale International
Terminal 4 Eastern Expansion Project (8 Gates)**



Airport Construction Projects

**BWI Construction Contract MAA-CO-15-005
D/E Connector and Security**



**DCA -Washington Reagan National
Project Journey, Secure National Hall**



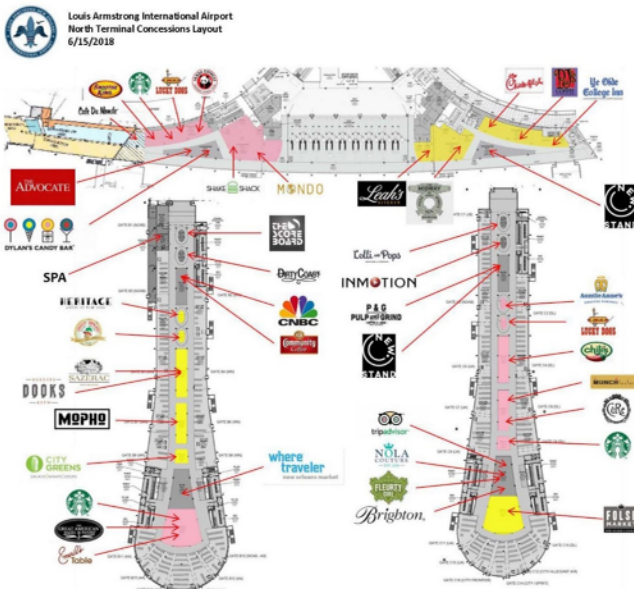
North Terminal Consolidated Checkpoint



Efficient passenger processing

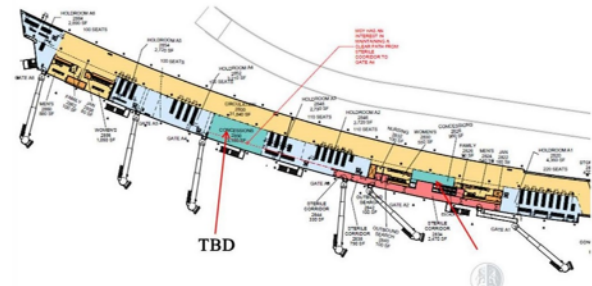
North Terminal Facts

- 972,000 sq. feet
- 3 concourses
- 35 gates
- \$993.7 million
- Opening February 2019



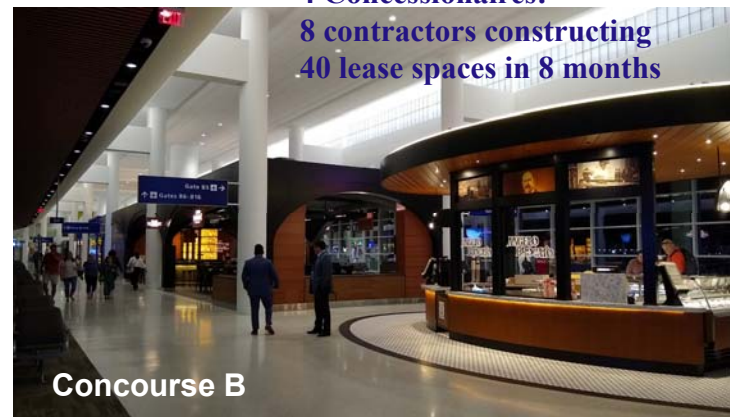
Concourse A

Spotlight: MSY North Terminal



Concourse C

Concessions Program Manager
4 Concessionaires:
8 contractors constructing
40 lease spaces in 8 months



Concourse B

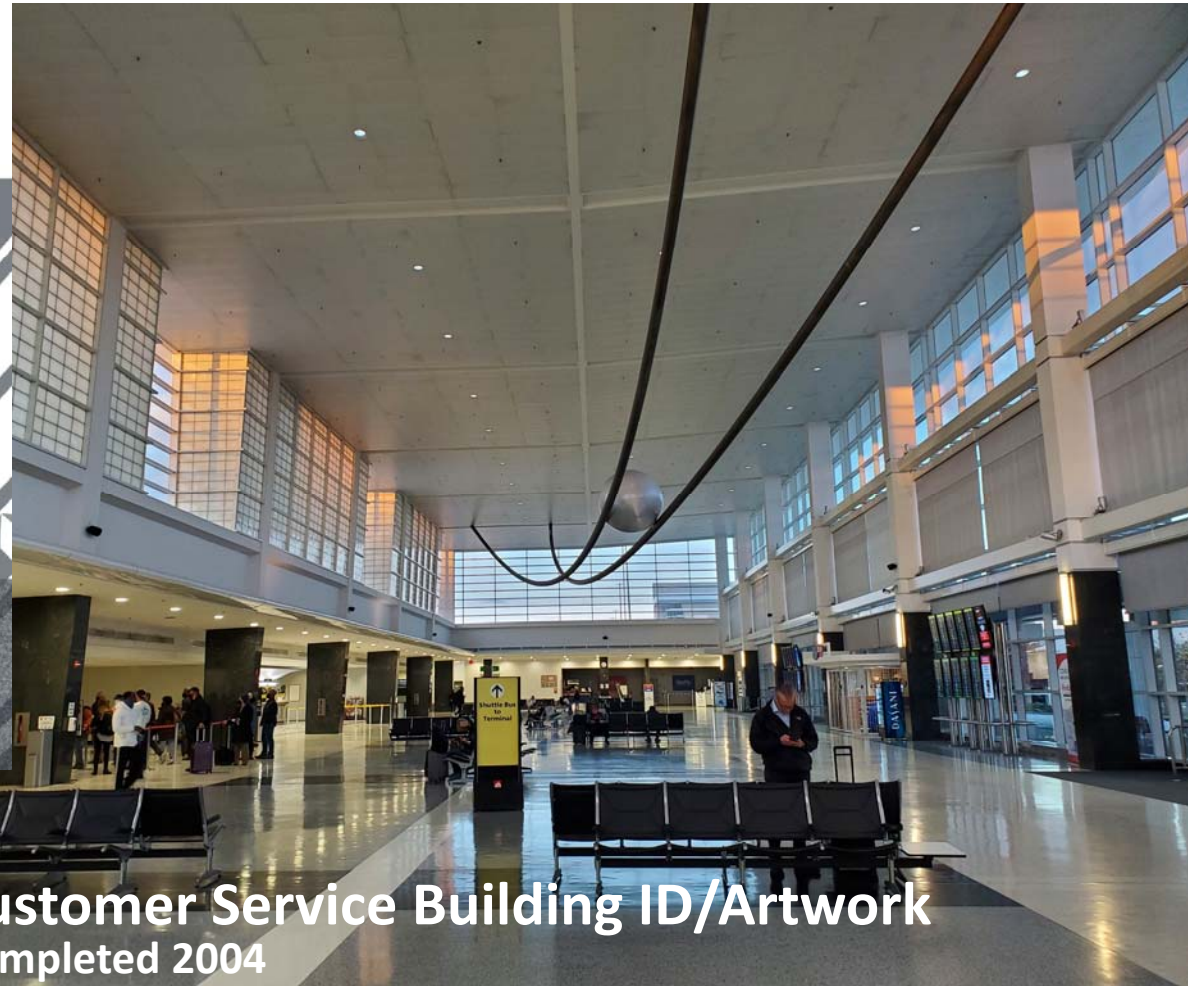


A/E Comprehensive Task Order Design

SIGNIFICANT A/E COMMISSIONS:

- **College Park Airport On Call 2016-2021,**
MD, Ongoing
- **BWI Consolidated Car Rental Facility ID/Artwork**
MD, Completed 2004
- **BWI Bus Maintenance Facility**
MD Completed 2003
- **ABQ Sunport, Observation Deck,**
NM, Completed: 1998
- **BWI Pier “D” Enhancements,**
MD, Completed: 1997
- **BWI Pier “C” Extension (6 Gate expansion),**
MD, Completed: 1995
- **BWI Observation Gallery,**
MD, Completed: 1995,
AIA 1996 PUBLIC BUILDING of the Year

BWI Consolidated Car Rental Facility



Customer Service Building ID/Artwork
Completed 2004



BWI Bus Maintenance Facility

Completed
2003

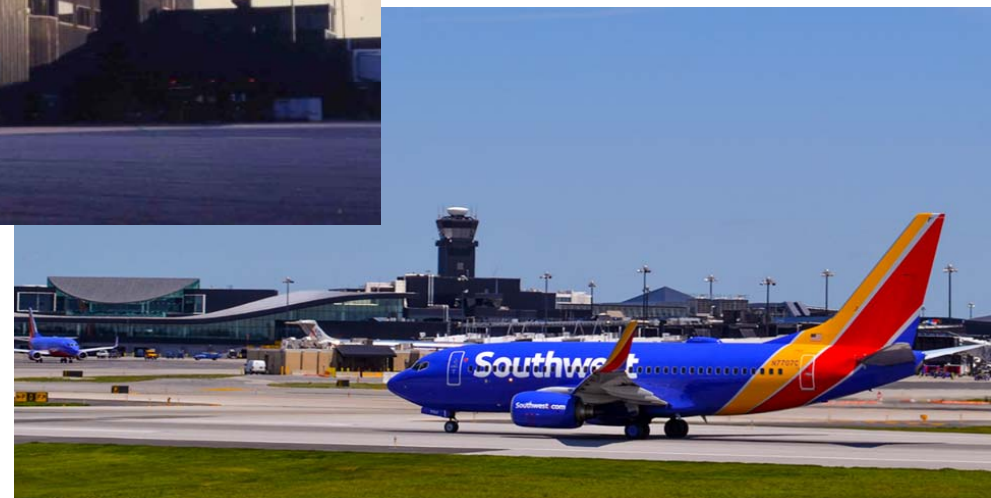


Design approach revolves around the comprehensive assimilation of Architecture, Interior Design and Engineering in the built environment.

BWI Observation Gallery

Completed: 1995

AIA 1996 PUBLIC BUILDING of the Year Award





Maryland Aviation Authority
(MAA)

Thank You

